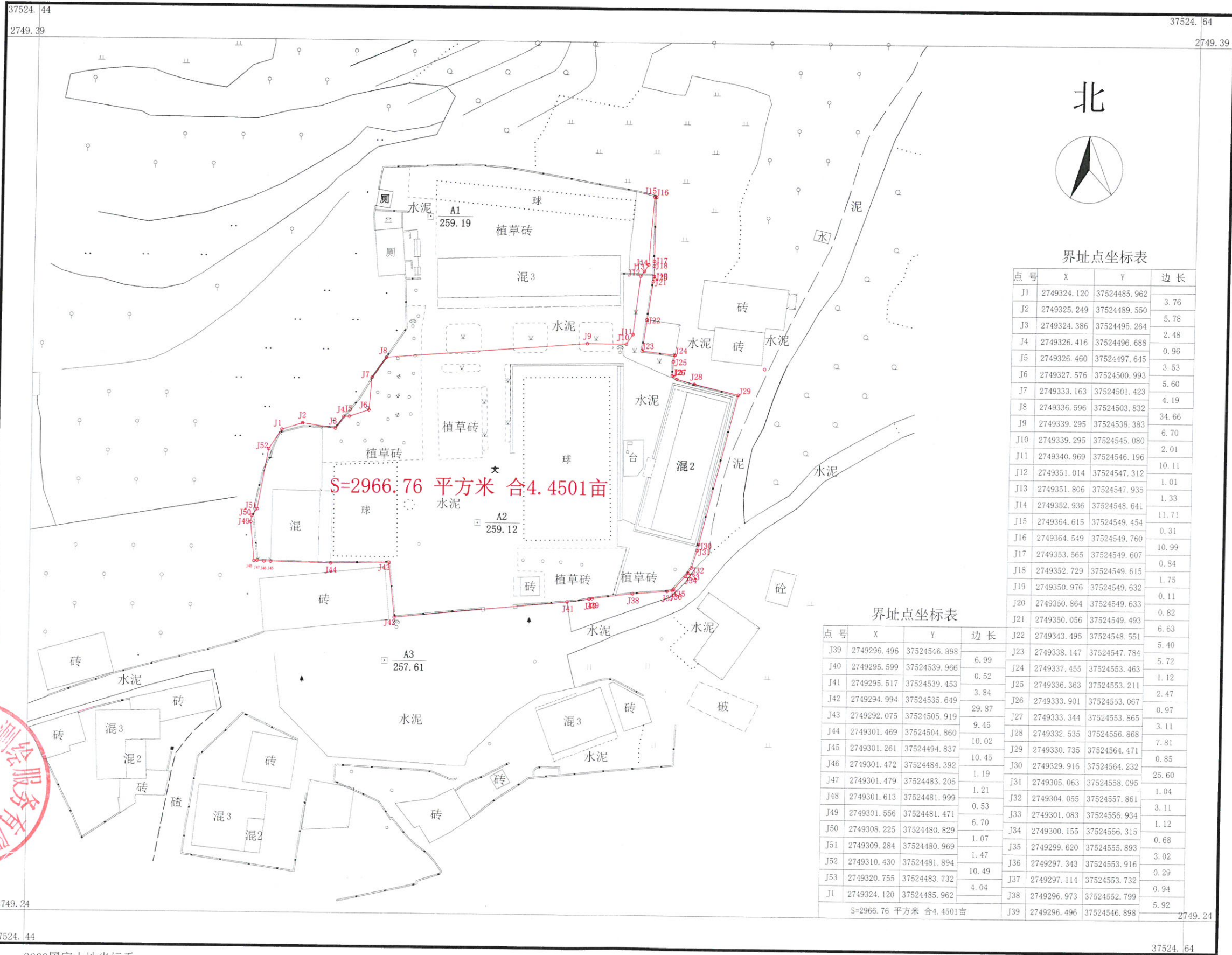


富川瑶族自治县富阳镇西屏完全小学宗地草图

2749.241-37524.443



界址点坐标表

点号	X	Y	边长
J1	2749324.120	37524485.962	3.76
J2	2749325.249	37524489.550	5.78
J3	2749324.386	37524495.264	2.48
J4	2749326.416	37524496.688	0.96
J5	2749326.460	37524497.645	3.53
J6	2749327.576	37524500.993	5.60
J7	2749333.163	37524501.423	4.19
J8	2749336.596	37524503.832	34.66
J9	2749339.295	37524538.383	6.70
J10	2749339.295	37524545.080	2.01
J11	2749340.969	37524546.196	10.11
J12	2749351.014	37524547.312	1.01
J13	2749351.806	37524547.935	1.33
J14	2749352.936	37524548.641	11.71
J15	2749364.615	37524549.454	0.31
J16	2749364.549	37524549.760	10.99
J17	2749353.565	37524549.607	0.84
J18	2749352.729	37524549.615	1.75
J19	2749350.976	37524549.632	0.11
J20	2749350.864	37524549.633	0.82
J21	2749350.056	37524549.493	6.63
J22	2749343.495	37524548.551	5.40
J23	2749338.147	37524547.784	5.72
J24	2749337.455	37524553.463	1.12
J25	2749336.363	37524553.211	2.47
J26	2749333.901	37524553.067	0.97
J27	2749333.344	37524553.865	3.11
J28	2749332.535	37524556.868	7.81
J29	2749330.735	37524564.471	0.85
J30	2749329.916	37524564.232	25.60
J31	2749305.063	37524558.095	1.04
J32	2749304.055	37524557.861	3.11
J33	2749301.083	37524556.934	1.12
J34	2749300.155	37524556.315	0.68
J35	2749299.620	37524555.893	3.02
J36	2749297.343	37524553.916	0.29
J37	2749297.114	37524553.732	0.94
J38	2749296.973	37524552.799	5.92
J39	2749296.496	37524546.898	6.99

界址点坐标表

点号	X	Y	边长
J39	2749296.496	37524546.898	6.99
J40	2749295.599	37524539.966	0.52
J41	2749295.517	37524539.453	3.84
J42	2749294.994	37524535.649	29.87
J43	2749292.075	37524505.919	9.45
J44	2749301.469	37524504.860	10.02
J45	2749301.261	37524494.837	10.45
J46	2749301.472	37524484.392	1.19
J47	2749301.479	37524483.205	1.21
J48	2749301.613	37524481.999	0.53
J49	2749301.556	37524481.471	6.70
J50	2749308.225	37524480.829	1.07
J51	2749309.284	37524480.969	1.47
J52	2749310.430	37524481.894	10.49
J53	2749320.755	37524483.732	4.04
J1	2749324.120	37524485.962	3.76

点号	X	Y	边长
J39	2749296.496	37524546.898	6.99
J23	2749338.147	37524547.784	5.72
J24	2749337.455	37524553.463	1.12
J25	2749336.363	37524553.211	2.47
J26	2749333.901	37524553.067	0.97
J27	2749333.344	37524553.865	3.11
J28	2749332.535	37524556.868	7.81
J29	2749330.735	37524564.471	0.85
J30	2749329.916	37524564.232	25.60
J31	2749305.063	37524558.095	1.04
J32	2749304.055	37524557.861	3.11
J33	2749301.083	37524556.934	1.12
J34	2749300.155	37524556.315	0.68
J35	2749299.620	37524555.893	3.02
J36	2749297.343	37524553.916	0.29
J37	2749297.114	37524553.732	0.94
J38	2749296.973	37524552.799	5.92
J39	2749296.496	37524546.898	6.99



2000国家大地坐标系
1985国家高程基准，等高距为1米
2007年版式
2024年06月

1:700

测量员：黄光临 邓楠
绘图员：邓楠
审核员：林杰